

'T PARELBOSCH

peuterspeelzaal kinderdagverblijf

Dear parents,

We understand there are parents who fall a little bit between shore and ship.

The work does not fall within the crucial professions but the employer expects you to work or you are normally employed within the crucial professions but are now ill at home.

All sorts of reasons that you need daycare, but you're not allowed to.

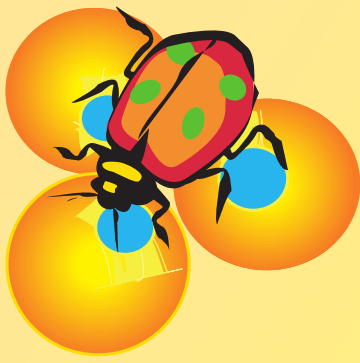
The lockdown is causing problems for many people.

We have a lot of understanding of the problems you face as a parent. Unfortunately, the guidelines we have to follow are not as flexible as what you are normally used to from 't Parelbosch. So, if the daycare is not granted, it is not because we do not want to, but simply because we are not allowed to. I hope you can understand this.

To take the pressure off our administration, here's a Q&A.

Table of Contents	
1.Help, am I on my own now? How is my child's development?....etc....etc....etc.....	2
2.Why does childcare close?	2
3.For whom is emergency daycare available?	2
4.What if I work in a crucial profession, but my partner does not?	3
5.Can internships continue?	3
6.Who is providing emergency daycare?	3
7.How to request emergency daycare at 't Parelbosch	3
8.Is 24-hour emergency daycare available in the evening, night and weekend?	3
9.May I also house children of parents in crucial professions in one of the other establishments?	4
10.Childcare costs and own contribution allowance.....	4
11.My child will remain at home on 16 December, do I have to continue to pay for childcare?	4
12.Why do I have to keep paying for childcare?	5
13.Now scheme and entitlement to childcare allowance	5
14.Influence hours worked at height childcare allowance.....	5





'T PARELBOSCH

peuterspeelzaal kinderdagverblijf

1. Help, am I on my own now? How is my child's development?.....etc.....etc.....etc.

There's going to be a lot of pressure on you as parents.

Working from home, being a full-time mum and dad, being a teacher... all at the same time.

The thought that you are not the only one who sometimes experience problems is reassuring but does not give you any handles.

Fortunately, our pedagogical department is accessible (via email address pedagogical coach Inge Bobbe inge@parelbosch.nl).

They can help, support and provide you with handles to get through the lockdown together. Besides the pedagogical part, there are also simple ways to work on the development of your child at home without creating a whole school situation. Reading a bedtime story already works wonders.

Don't hesitate, we're here for you.

2. Why is childcare closing?

The measure aims to reduce the number of contact moments and travel movements of parents and thereby reduce the spread of the virus. The starting point is that everyone stays at home as much as possible and works at home. The closure of childcare contributes to this.

Hence the urgent request to organise the daycare at home as much as possible.

Childcare does not close because of the risks of contamination on childcare. Young children have a limited role in the spread of coronavirus.

3. For whom is emergency daycare available?

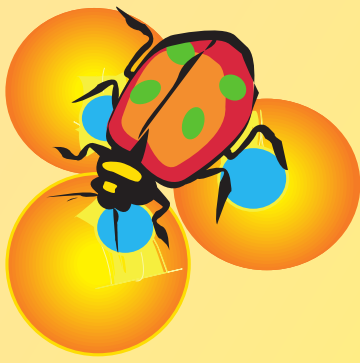
Emergency daycare is available for:

- children whose parents work in a crucial profession;
only during the hours the parent is employed. An afternoon shift therefore does not entitle you to daycare during the morning! And vice versa.
- children who need extra attention due to special problems or a difficult home situation.

Emergency care provided by a childcare organisation is only available to children of parents who have a contract with the childcare centre and for the number of hours agreed in the contract. Please note: This is different from the situation in the spring. Do you work in a crucial profession and do you want to use extra childcare during regular opening hours? Then this will be billed extra.

<https://www.rijksoverheid.nl/onderwerpen/coronavirus-covid-19/ouders-scholieren-en-studenten-kinderopvang-en-onderwijs/cruciale-beroepen>





'T PARELBOSCH

peuterspeelzaal kinderdagverblijf

4. What if I work in a crucial profession, but my partner doesn't?

The starting point for one parent who carries out a crucial profession is that parents arrange the care at home as much as possible. But that's not a hard requirement. If they are not able to take care of the children themselves, these parents can still take the children to the emergency daycare.

Due to the large number of emergency daycare requests within the city of Eindhoven, the local government is now looking to make the emergency daycare available only to children from whom both parents are working within the crucial professional groups. As soon as a decision has been made, we will inform you.

5. Can internships continue?

Whether an internship can go ahead or not, depends on the rules that apply to the sector where the internship is done. If these activities continue, the internship can also continue.

Students with children who are doing their practical internship within the crucial professional groups can therefore also use the emergency daycare, but only on the internship days. Not on the school days.

6. Who is providing emergency daycare?

The Childcare provides the emergency daycare during the planned Christmas holidays from Mon 21-12 to Fri 01-01. The Childcare Centre also provides emergency care on a study day or partial study day notified in advance by the schools outside that period, for example on Friday 18 December.

The schools provide emergency daycare on the days and times when education would normally take place. So in this case on Wed 16-12 to Fri 18-12 from Mon 04-01 to Tue 19-01 (during school time!)

The Childcare system provides emergency care on regular days, but outside the regular teaching hours, during class times the school itself was responsible for the reception.

7. How to request emergency daycare at 't Parelbosch

All reception in the period 16-12-2020 tm 17-01-2021 has been cancelled. So all requests for the Christmas holidays have also been cancelled.

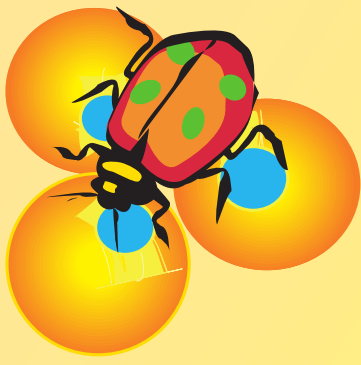
If you want to use the Emergency Daycare you can send an e-mail to planning@parelbosch.nl.

Please note that you have to meet the requirements for the Emergency Daycare in order to be able to use them.

8. Is there also 24-hour emergency daycare available in the evening, night and weekend?

At the moment there is no 24-hour emergency daycare. Emergency daycares only take place during the regular opening hours.





'T PARELBOSCH

peuterspeelzaal kinderdagverblijf

9. Can I also house children of parents in crucial professions in one of the other establishments?

In practice, we see that childcare organisations, for example, which have several branches, keep a few branches open to accommodate the children of these parents in crucial professions. This clustering is allowed. However, it is important that holders take into view of the best interests of the child and, for example, try to use as many faces as possible for the children.

This is also the case at 't Parelbosch.

The daycare takes place on location De Waghemakerstraat. The reception is designed by the misses of both location Pasqualinistraat and location the Waghemakerstraat.

10. Childcare costs and personal contribution allowance

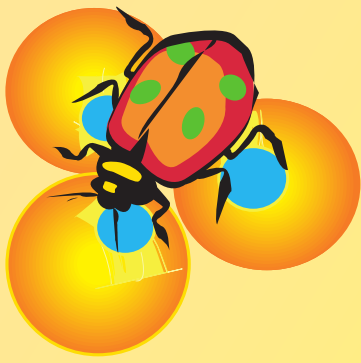
All parents who usually use childcare and continue to pay their bill in full will receive an allowance of their own contribution. The allowance applies to all types of formal care (day care, out-of-school care, VVE preschool and host parent care) up to the maximum hourly rate. This also applies to parents in crucial professions. However, they can use childcare and are asked to pay their invoice.

11. My child will remain at home on 16 December, do I have to continue to pay for childcare?

And:

- Pay the entire bill for care as you always do. Most childcare organizations invoice in advance. So did 't Parelbosch. That means you've probably already paid your bill for the month of December. We also ask you to continue paying the invoice for the period in January.
- Part of the cost of childcare consists of an own contribution. You will receive an allowance for your own contribution to the maximum hourly rate from the government.
- If you do not meet the invoice, the right to childcare allowance will expire.





'T PARELBOSCH

peuterspeelzaal kinderdagverblijf

12. Why do I have to keep paying for childcare?

- If you continue to pay for childcare or host parent care, you will keep your place at the daycare when it reopens to everyone.
- If you simply pay the invoice, you do not have to adjust anything to the Tax Office/Surcharges for your childcare allowance. For example, you are entitled to childcare allowance and it is paid by the Tax Office.
- You will receive an allowance for your own contribution to the maximum hourly rate. The reason for the allowance is that parents cannot use childcare during the closure, but can incur costs.
- This prevents childcare from getting into financial difficulties and thus guarantees the survival of childcare after the Lockdown.

13. Now scheme and entitlement to childcare allowance

Parents who use the NOW retain the right to childcare allowance.

14. Impact of hours worked on height of childcare allowance

Do the coronavirus make you work fewer hours? This does not affect the level of your childcare allowance. By 2020, the number of hours you are entitled to childcare allowance will be maintained. If this means that your income is lower, please pass it on to the Tax Office/Surcharges.

